

# EZ-OX™

## OXYGEN USP

### Valve instructions

#### Before use check:

- The pressure gauge to confirm contents **3**

#### Connect according to use

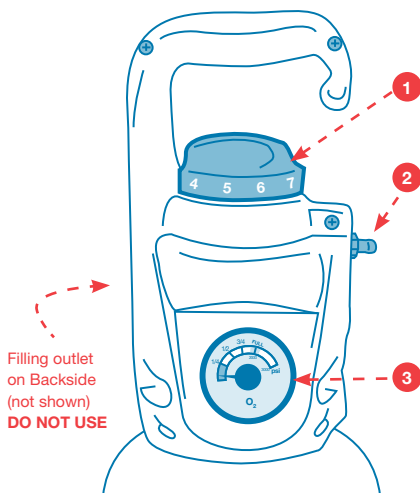
- Connect the tube to the nipple outlet **2**

#### Using the cylinder

- Adjust the dial **1** to the required flow rate
- Ensure there is a flow

#### After each use

- Turn the cylinder off by setting the flow rate to 0 litre/min (dial **1**)
- Remove the tubing from nipple outlet **2**



**WARNING : If the dial is set between two flow rate values, the flow will stop **2****

### Handling

- ! Keep cylinder, regulator, all equipment, and connections free of oil, grease, or other combustible materials at all times.
- ! Use only accessories (ie nasal cannula, masks, hoses etc) which are intended for and cleaned for oxygen services.
- ! DO NOT smoke in the area where oxygen is in use. Oxygen enriched environments may ignite causing personal injury or property damage.
- ! Inherently, portable oxygen systems are subject to more abuse than stationary units. Care must be taken to minimize the abuse a portable oxygen system endures to ensure the accuracy and longevity of your system. One should avoid jarring or dropping systems as this may cause damage to the unit. If a system is jarred, dropped or knocked over, it should be checked to ensure connections are secure, components are not damaged, and that the proper flow rates are maintained.
- ! Proper training is required before any repairs should be attempted.
- ! Always turn oxygen systems on slowly and ensure system is secured.

### Storage & Maintenance

- DO NOT attempt to service or remove regulator from the cylinder. Improper servicing of product may create conditions for the regulator or cylinder to propel with great force.
- Systems should be stored where they will not fall over or be subjected to damage from objects falling on or against them.
- Systems should be stored in a sheltered location to protect them from the elements and excessive moisture.
- Never store system near heat or open flame, or in extreme cold conditions.
- When the flow knob is set to 0, if any hissing sound can be heard indicating a leak, remove the cylinder from service, place it in a well ventilated area, and tag and return it for repair.
- If cover or knob is damaged, any leakage noticed, if knob does not turn or grinds — return cylinder.
- Oxygen system will be tested at a minimum every 5 years by VitalAire (inspection date will be applied after testing).